

DIN 334-A • DIN 335-A • DIN 347-A

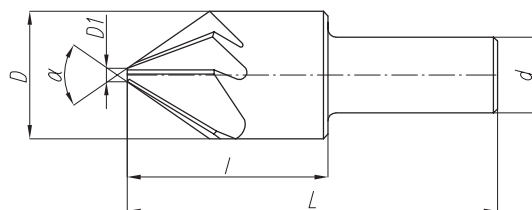
J

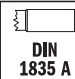
Pogłębiacze wielostrzowe z chwytem walcowym gładkim

Multiflute countersinks plain shank

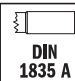
Kegelsenker, Zylinderschaft

Зенковки многоперьевые с цилиндрическим хвостовиком

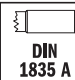


DIN 334-A	Z=5÷7	α=60°	
------------------	--------------	--------------	--

D	D1	d (h9)	L	l	z	α	HSS		HSS-E	
							Code No 0641-261-		Code No 0641-261-	
8	1.5	8	50	-	5	60°	040109	●	040608	○
10	1.8	8	50	16	5	60°	040200	●	040610	○
12.5	2	8	50	18	6	60°	040302	●	040700	○
16	3.2	10	60	24	6	60°	040404	●	040801	○
20	5	10	63	27	7	60°	040506	●	040903	○

DIN 335-A	Z=5÷7	α=90°	
------------------	--------------	--------------	---

D	D1	d (h9)	L	l	z	α	HSS		HSS-E	
							Code No 0641-261-		Code No 0641-261-	
8	1.5	8	48	-	5	90°	045102	●	045601	○
10	1.8	8	48	14	5	90°	045204	●	045614	○
12.5	2	8	48	16	6	90°	045306	●	045703	○
16	3.2	10	56	20	6	90°	045408	●	045805	○
20	5	10	60	24	7	90°	045500	●	045907	○

DIN 347-A	Z=6	α=120°	
------------------	------------	---------------	---

D	D1	d (h9)	L	l	z	α	HSS		HSS-E	
							Code No 0641-261-		Code No 0641-261-	
16	3.2	10	53	17	6	120°	052106	●	053107	○